

# Shoulder Tent S Series

SHOULDER S43-1



SHOULDER ARCHITECTURE

## Shoulder Tent S Series

S H O U L D E R S 4 3 - 1

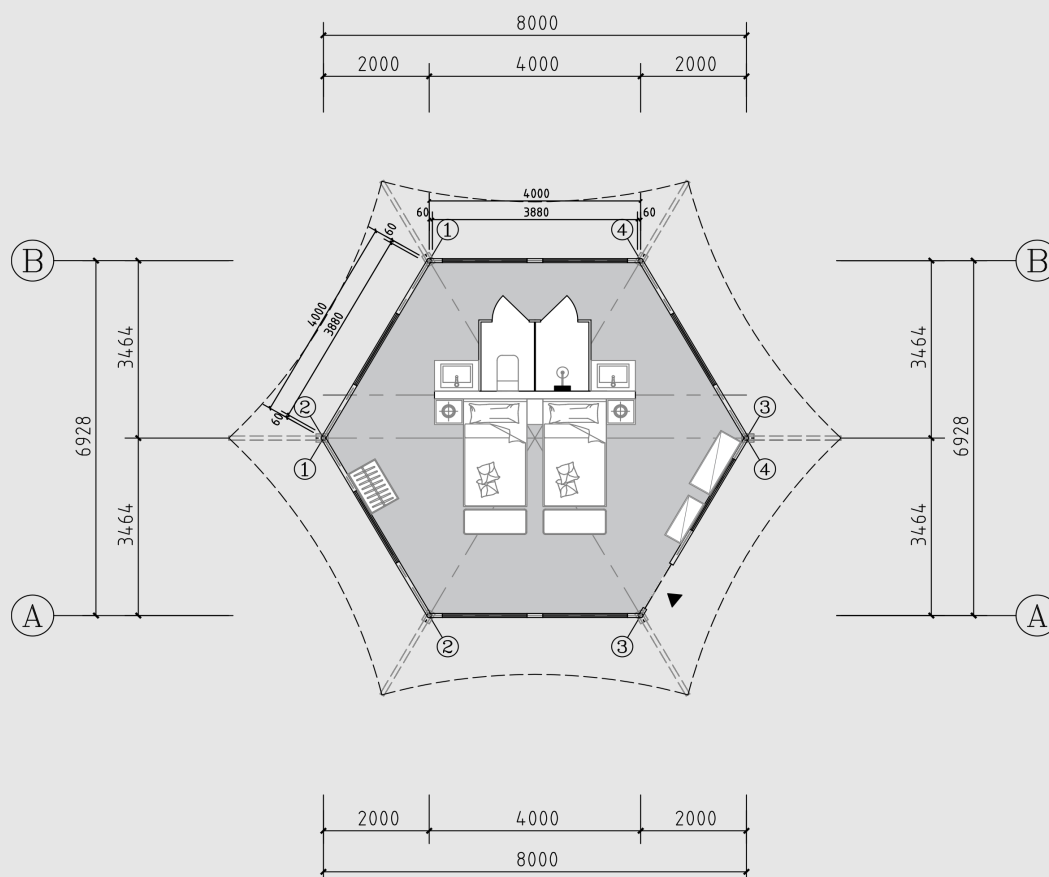
Model Type: One bedroom & One bathroom

Floor Area: 43 m<sup>2</sup>

Projected Area: 77.8 m<sup>2</sup>

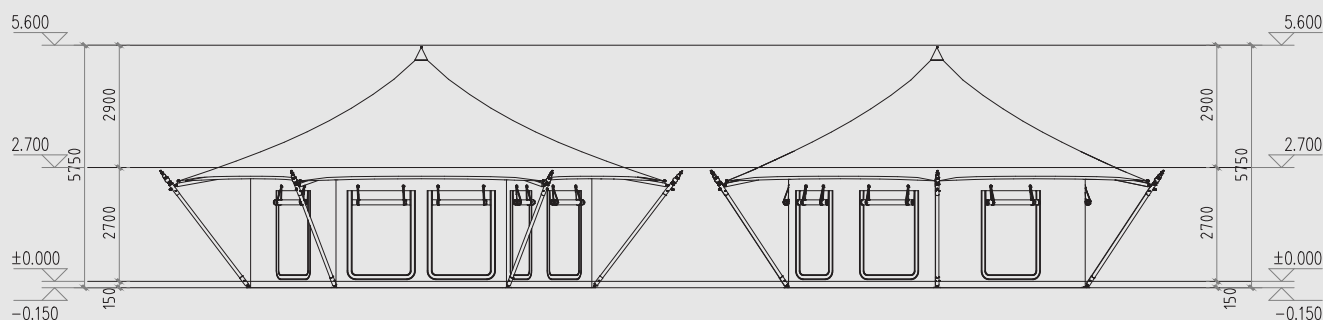
Number of beds: 2 bed

Capacity: 2people



Floor Plan





Elevation

**SHOULDER ARCHITECTURE**  
舒特建筑科技有限公司

Address: Linde Industrial Zone, North  
Tang Town, Changshu City, Jiangsu  
Province, China  
408000 China  
Tel: 158 1850 8822  
Fax: 158 2331 8272  
Web: www.shoulderarchi.com  
E-mail: info@shoulderarchi.com

Project Title  
项目名称

Location 位置

Project Number  
项目编号

Drawing Title  
图名

Scale  
比例

Drawing number  
图号

REVISIONS

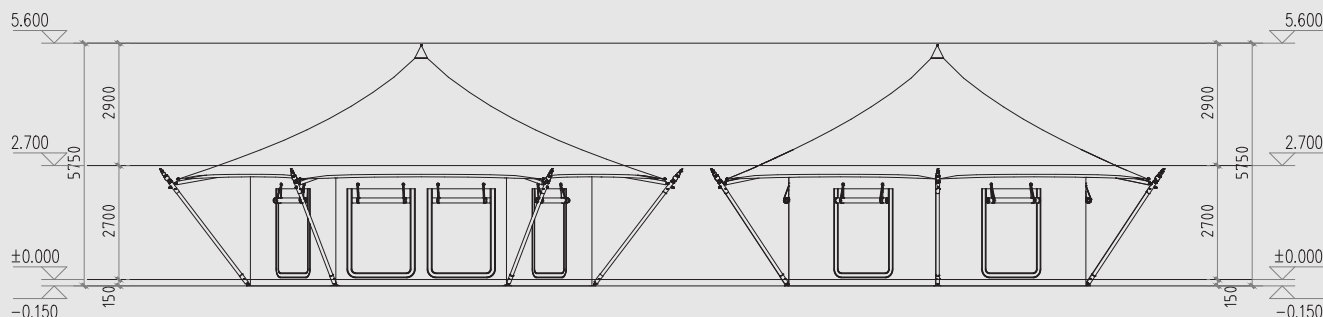
Rev.	Description
1	First Issue
2	Second Issue
3	Third Issue
4	Fourth Issue
5	Fifth Issue
6	Sixth Issue
7	Seventh Issue
8	Eighth Issue
9	Ninth Issue
10	Tenth Issue

Project Number  
项目编号

Drawing Title  
图名

Scale  
比例

Drawing number  
图号



Elevation

**SHOULDER ARCHITECTURE**  
舒特建筑科技有限公司

Address: Linde Industrial Zone, North  
Tang Town, Changshu City, Jiangsu  
Province, China  
408000 China  
Tel: 158 1850 8822  
Fax: 158 2331 8272  
Web: www.shoulderarchi.com  
E-mail: info@shoulderarchi.com

Project Title  
项目名称

Location 位置

Project Number  
项目编号

Drawing Title  
图名

Scale  
比例

Drawing number  
图号

REVISIONS

Rev.	Description
1	First Issue
2	Second Issue
3	Third Issue
4	Fourth Issue
5	Fifth Issue
6	Sixth Issue
7	Seventh Issue
8	Eighth Issue
9	Ninth Issue
10	Tenth Issue

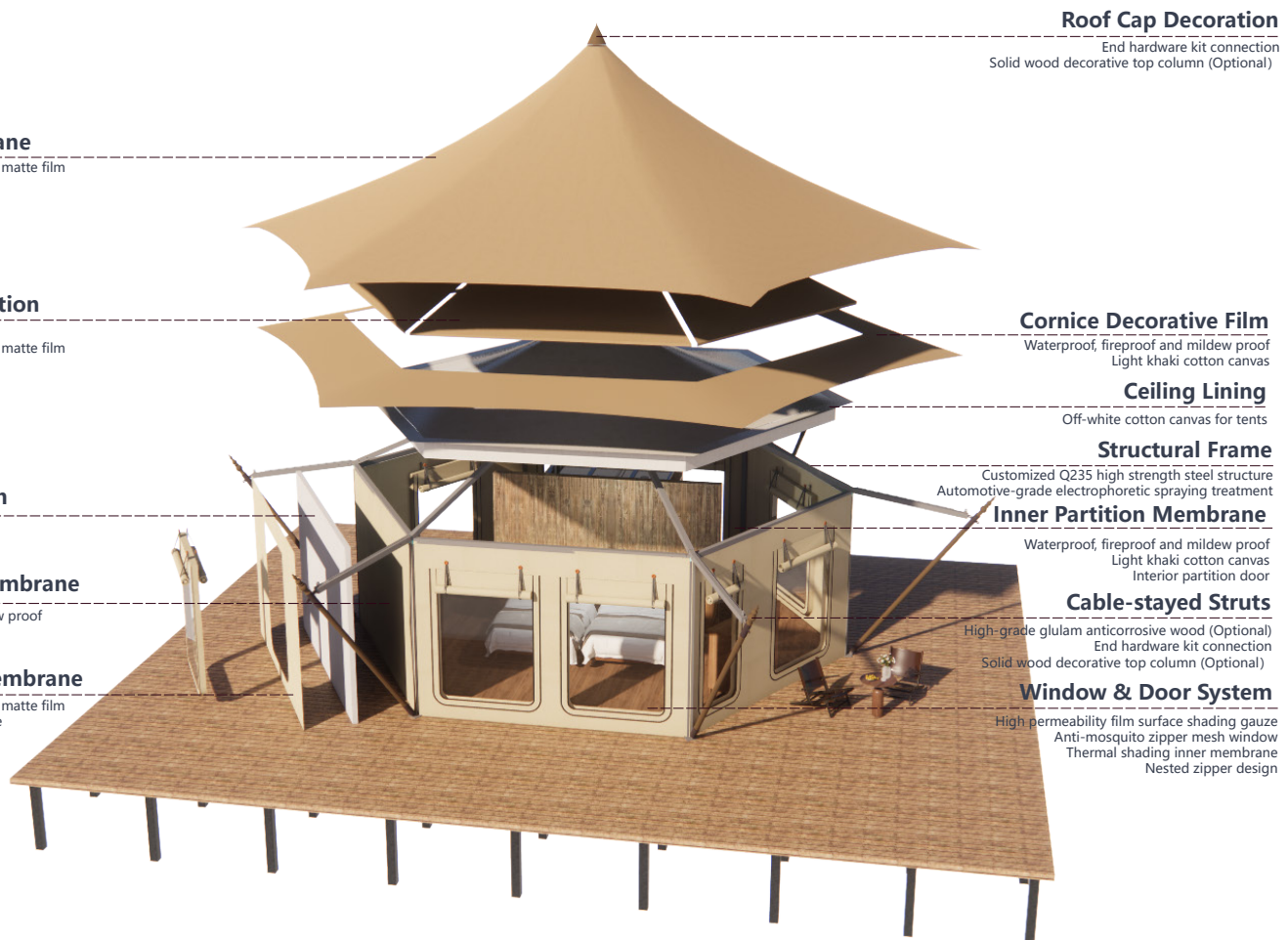
Project Number  
项目编号

Drawing Title  
图名

Scale  
比例

Drawing number  
图号

## Material specification



## Facade demonstrate









## Tent Optional Accessories

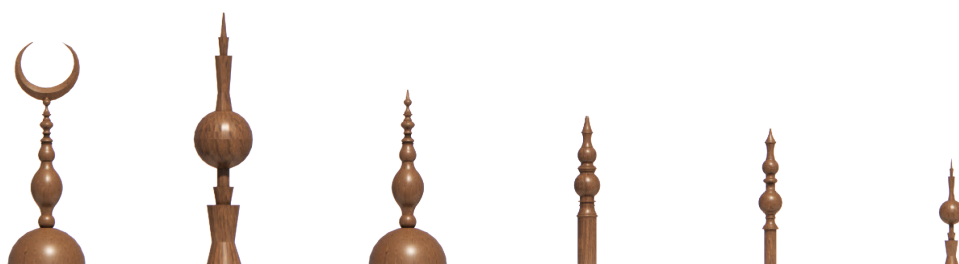
**Glass windows:** Double hollow LOW-E glass 5+12A+5;  
Special bridge-cut aluminum alloy for glass window;  
Steel auxiliary frame fixed; High quality hardware;  
Bridge-cutoff aluminum alloy frame (customized color to match the overall style).

**Glass door:** Double hollow LOW-E glass 5+12A+5;  
Special bridge-cut aluminum alloy for glass window;  
Steel auxiliary frame fixed; High quality hardware;  
Bridge-cutoff aluminum alloy frame (customized color to match the overall style).



## Top column Optional Accessories

**Top column:** Solid wood decorative top column.  
It can be customized according to the project style.





## Comprehensive service

# DESIGN

Conceptual Design: Project Feasibility Report; Project Concept Planning Proposal.  
Schematic Design: Architectural Design; Interior Decoration Design; Landscape Design.  
Deepening Design: Construction Drawing Design and Deepening; Detailed Materials Manual.

# MANUFACTURE

Flexible Production: Assemble components are produced in self-operated factory.  
Industrial production ensures fast assembly construction.  
Accessories Purchasing: Highly cost-effective Accessories; Well-optimized and customized by Designers.

# CONSTRUCTION

Guided Construction: On-site Construction Disclosure; Guidance and Acceptance Check;  
Commissioning Guidance.  
All-inclusive Construction: We have project managers and skilled workers to provide all-inclusive construction services.



For further information,  
please contact our sales.

TEL	+ 86 15818508822
EMAIL	<a href="mailto:info@shoulderarchi.com">info@shoulderarchi.com</a>
WEB	<a href="http://www.shoulderarchi.com">www.shoulderarchi.com</a>



**Shenzhen Management Center**

Room 2710, F Building, Xinghe World, No.1 Yabao Road, Nankeng Community, Bantian Street, Longgang District, Shenzhen City, Guangdong Province, China.



**Zhengzhou R&D Center**

No.6 Liangku Industrial Zone, North Third Ring Road, Huiji District, Zhengzhou City, Henan Province, China.



**Yingde Manufacturing Center**

Shoulder Industrial Zone, Xujiashuang, Hanguang Town, Yingde, Qingyuan City.



**Guangzhou Marketing Center**

Room 1308, South Tower, Guangzhou World Trade Center Complex, No.371, Huanshi Dong Road, Yuexiu District, Guangzhou City, Guangdong Province, China.