

# Shoulder Tent S Series

SHOULDER S45-1



  
SHOULDER ARCHITECTURE



## Shoulder Tent S Series

S H O U L D E R S 4 5 - 1

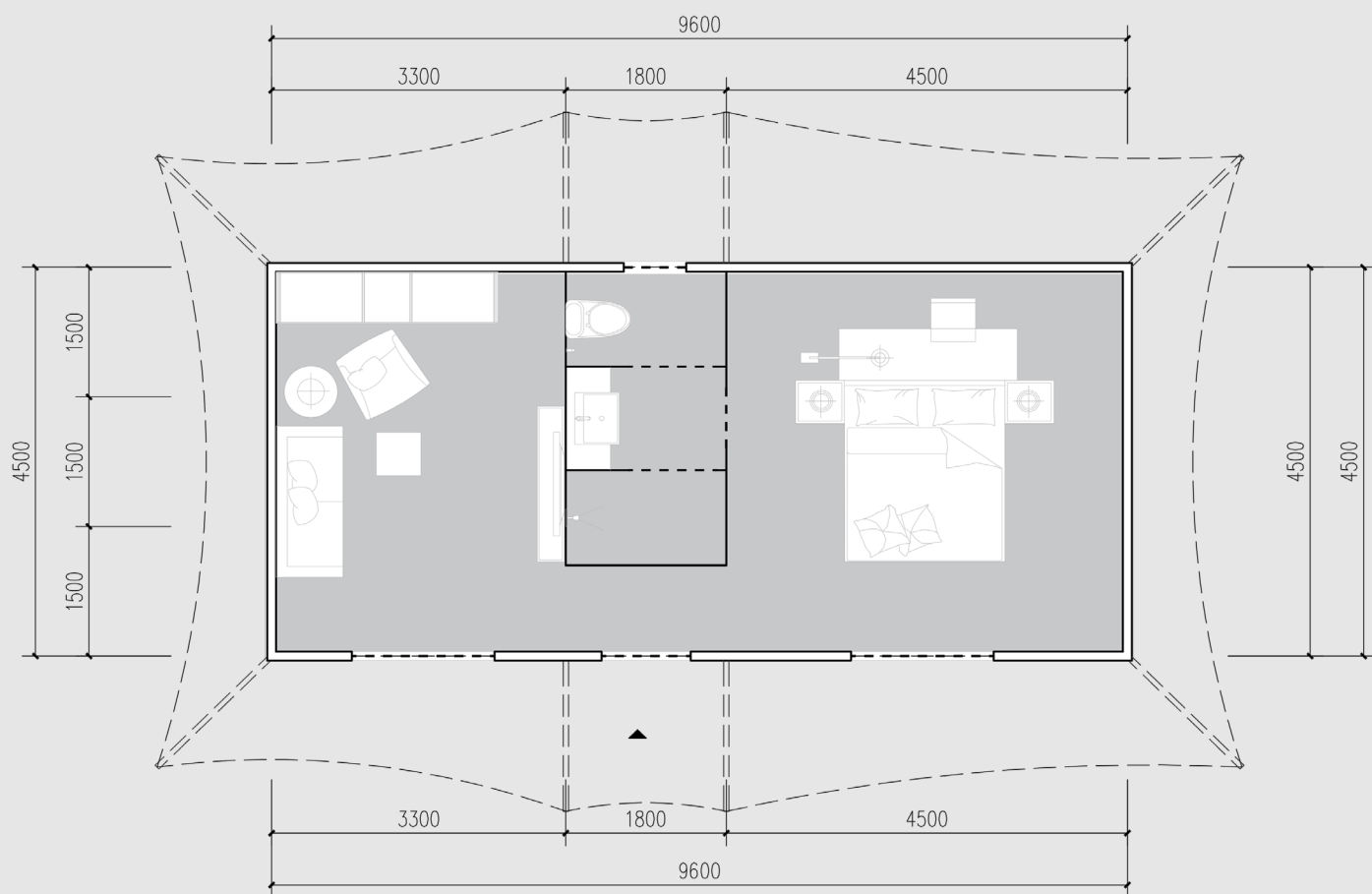
Model Type: One Bedroom & One Living Room  
& One Bathroom

Floor Area: 45 m<sup>2</sup>

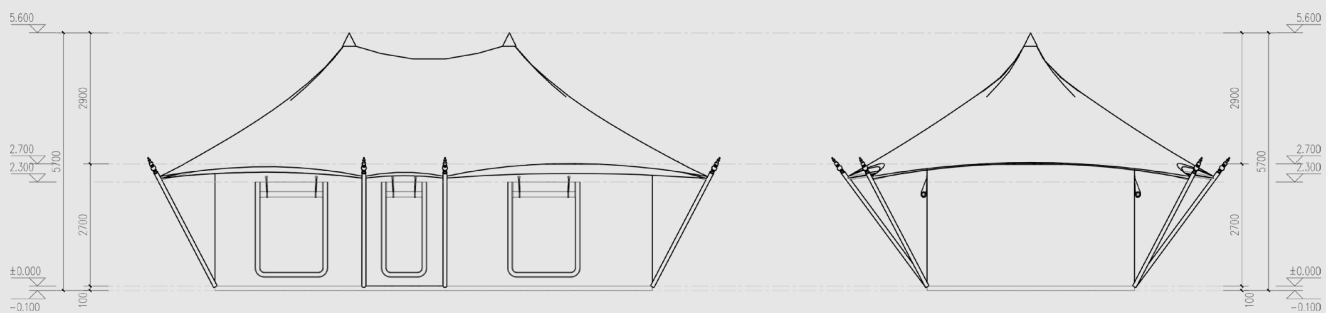
Projected Area: 86 m<sup>2</sup>

Number of beds: 1 bed

Capacity: 2 - 3 people



Floor Plan



Elevation



Shoulder Architecture Technology Co., Ltd.  
舒特建筑科技有限公司

No. 4, Linyi Industrial Zone, North  
Jingdezhen City, Jiangxi Province  
430000 China  
河南省郑州市金水区三环路东工务局工程处  
450000 China  
Tel: 158 1850 8822  
Fax: 158 1850 8822  
Web: www.shoulderarchi.com  
E-mail: info@shoulderarchi.com

Project Title  
项目名称

Location 位置

REVISIONS

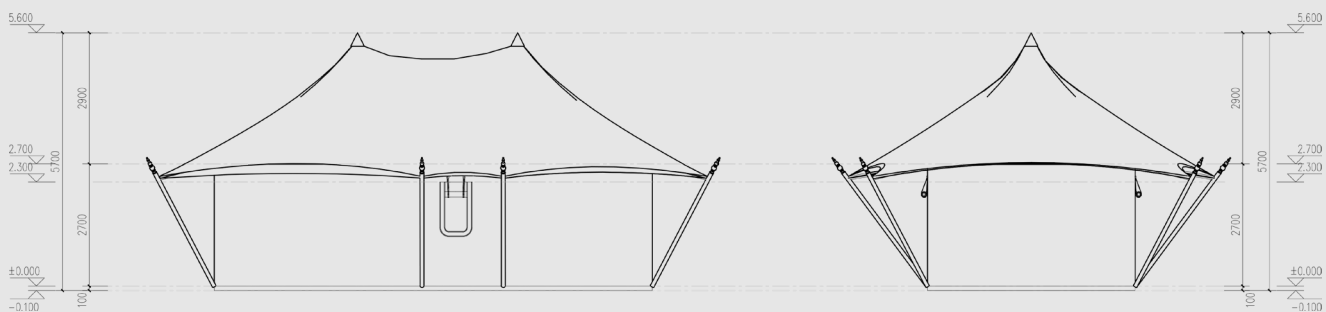
Rev.	Description
1	First Issue
2	Second Issue
3	Third Issue
4	Fourth Issue
5	Fifth Issue
6	Sixth Issue
7	Seventh Issue
8	Eighth Issue
9	Ninth Issue
10	Tenth Issue

Project Number  
项目编号

Drawing Title  
图名

Scale  
比例

Drawing number  
图号



Elevation



Shoulder Architecture Technology Co., Ltd.  
舒特建筑科技有限公司

No. 4, Linyi Industrial Zone, North  
Jingdezhen City, Jiangxi Province  
430000 China  
河南省郑州市金水区三环路东工务局工程处  
450000 China  
Tel: 158 1850 8822  
Fax: 158 1850 8822  
Web: www.shoulderarchi.com  
E-mail: info@shoulderarchi.com

Project Title  
项目名称

Location 位置

REVISIONS

Rev.	Description
1	First Issue
2	Second Issue
3	Third Issue
4	Fourth Issue
5	Fifth Issue
6	Sixth Issue
7	Seventh Issue
8	Eighth Issue
9	Ninth Issue
10	Tenth Issue

Project Number  
项目编号

Drawing Title  
图名

Scale  
比例

Drawing number  
图号

## Material specification

### Roof Outer Membrane

Advanced knife scraping coating matte film

### Roof Cap Decoration

End hardware kit connection  
Solid wood decorative top column (Optional)

### Roof Closure Insulation

Thermal insulation cotton  
Advanced knife scraping coating matte film

### Structural Frame

Customized Q235 high strength steel structure  
Automotive-grade electrophoretic spraying treatment

### Cornice Decorative Film

Waterproof, fireproof and mildew proof  
Light khaki cotton canvas

### Ceiling Lining

Off-white cotton canvas for tents

### Inner Partition Membrane

Waterproof, fireproof and mildew proof  
Light khaki cotton canvas  
Interior partition door

### Side Wall Inner Membrane

Waterproof, fireproof and mildew proof  
Light khaki cotton canvas

### Side Wall Insulation

Thermal insulation cotton

### Cable-stayed Struts

High-grade glulam anticorrosive wood (Optional)  
End hardware kit connection  
Solid wood decorative top column (Optional)

### Window & Door System

High permeability film surface shading gauze  
Anti-mosquito zipper mesh window  
Thermal shading inner membrane  
Nested zipper design

### Side Wall Outer Membrane

Advanced knife scraping coating matte film  
Copper hardware hanging buckle

## Facade demonstrate







## Tent Optional Accessories

**Glass windows:** Double hollow LOW-E glass 5+12A+5;  
Special bridge-cut aluminum alloy for glass window;  
Steel auxiliary frame fixed; High quality hardware;  
Bridge-cutoff aluminum alloy frame (customized color to match the overall style).

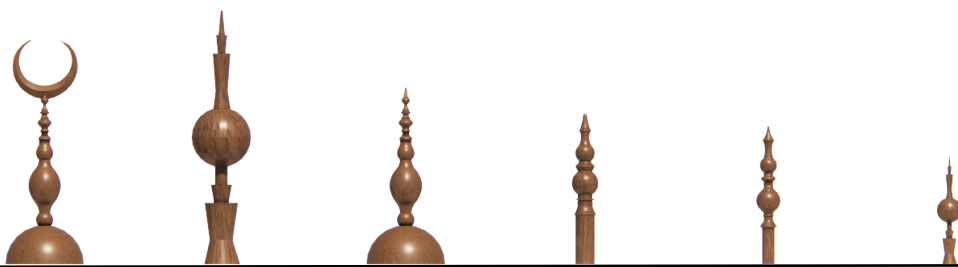
**Glass door:** Double hollow LOW-E glass 5+12A+5;  
Special bridge-cut aluminum alloy for glass window;  
Steel auxiliary frame fixed; High quality hardware;  
Bridge-cutoff aluminum alloy frame (customized color to match the overall style).





## Top column Optional Accessories

**Top column:** Solid wood decorative top column.  
It can be customized according to the project style.





## Comprehensive service

# DESIGN

Conceptual Design: Project Feasibility Report; Project Concept Planning Proposal.  
Schematic Design: Architectural Design; Interior Decoration Design; Landscape Design.  
Deepening Design: Construction Drawing Design and Deepening; Detailed Materials Manual.

# MANUFACTURE

Flexible Production: Assemble components are produced in self-operated factory.  
Industrial production ensures fast assembly construction.  
Accessories Purchasing: Highly cost-effective Accessories; Well-optimized and customized by Designers.

# CONSTRUCTION

Guided Construction: On-site Construction Disclosure; Guidance and Acceptance Check;  
Commissioning Guidance.  
All-inclusive Construction: We have project managers and skilled workers to provide all-inclusive construction services.



For further information,  
please contact our sales.

TEL	+ 86 15818508822
EMAIL	<a href="mailto:info@shoulderarchi.com">info@shoulderarchi.com</a>
WEB	<a href="http://www.shoulderarchi.com">www.shoulderarchi.com</a>



**Shenzhen Management Center**

Room 2710, F Building, Xinghe World, No.1 Yabao Road, Nankeng Community, Bantian Street, Longgang District, Shenzhen City, Guangdong Province, China.



**Zhengzhou R&D Center**

No.6 Liangku Industrial Zone, North Third Ring Road, Huiji District, Zhengzhou City, Henan Province, China.



**Yingde Manufacturing Center**

Shoulder Industrial Zone, Xujiashuang, Hanguang Town, Yingde, Qingyuan City.



**Guangzhou Marketing Center**

Room 1308, South Tower, Guangzhou World Trade Center Complex, No.371, Huanshi Dong Road, Yuexiu District, Guangzhou City, Guangdong Province, China.