

Shoulder Tent S Series

SHOULDER S86-1



SHOULDER ARCHITECTURE

Shoulder Tent S Series

SHOULDER S 8 6 - 1

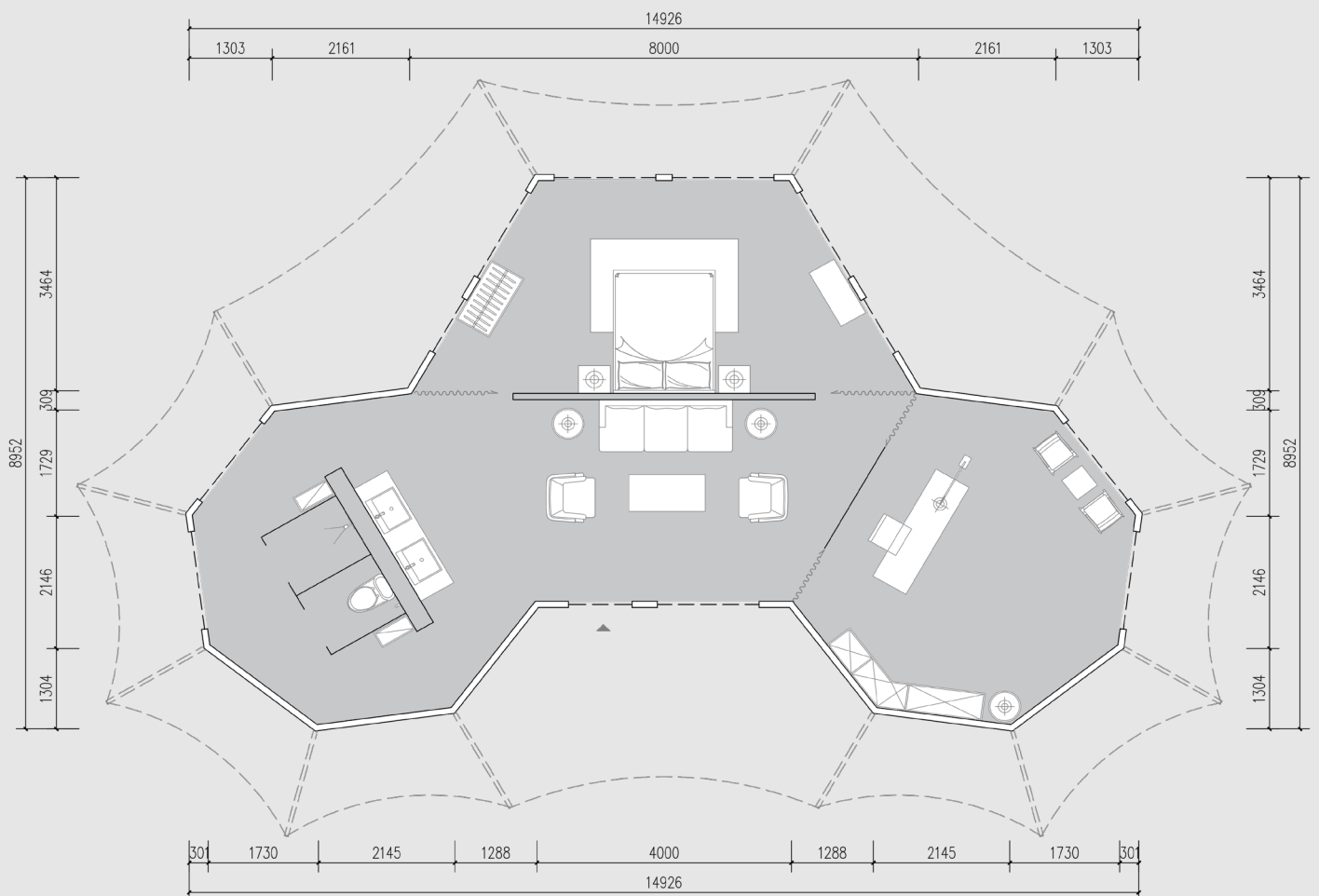
Model Type: Two Bedroom & One Living Room
& One Bathroom

Floor Area: 86 m²

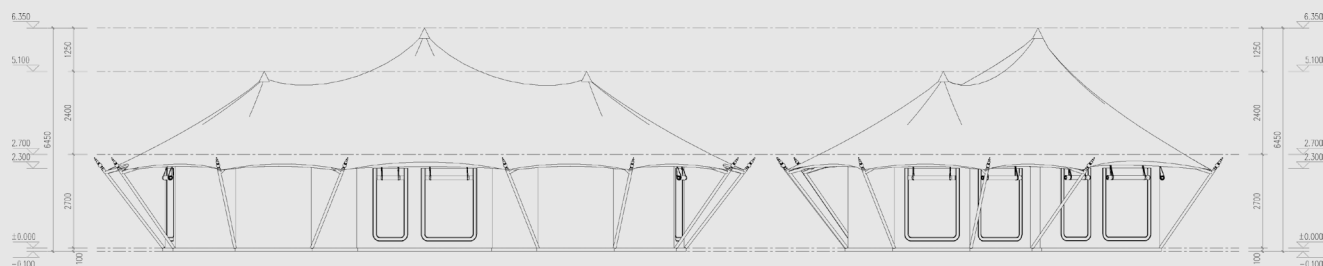
Projected Area: 174 m²

Number of beds: 1 bed

Capacity: 2 - 3 people



Floor Plan



Elevation



Shoulder Architecture Technology Co., Ltd.
舒特建筑科技有限公司
No. 4, Lingshi Industrial Zone, North
Third Ring Road,
Haidian District, Beijing City, P.R. China
400000 China
河南新乡市高新技术区北三环路第三环
路北侧第四号 400000
Tel: 158 1850 8822
158 2331 8272
Web: www.shoulderarchi.com
E-mail: info@shoulderarchi.com

Project Title
项目名称

Location 位置

REVISIONS

第一版 第二版

第三版 第四版

第五版 第六版

APPROVED

审 定

审 核

审 校

审 图

审 计

审 算

审 核

审 计

审 算

审 核

审 计

审 算

审 核

审 计

审 算

审 核

审 计

审 算

审 核

审 计

审 算

审 核

审 计

审 算

审 核

审 计

审 算

审 核

审 计

审 算

审 核

审 计

审 算

审 核

审 计

审 算

审 核

审 计

审 算

审 核

审 计

审 算

审 核

审 计

审 算

审 核

审 计

审 算

审 核

审 计

审 算

审 核

审 计

审 算

审 核

审 计

审 算

审 核

审 计

审 算

审 核

审 计

审 算

审 核

审 计

审 算

审 核

审 计

审 算

审 核

审 计

审 算

审 核

审 计

审 算

审 核

审 计

审 算

审 核

审 计

审 算

审 核

审 计

审 算

审 核

审 计

审 算

审 核

审 计

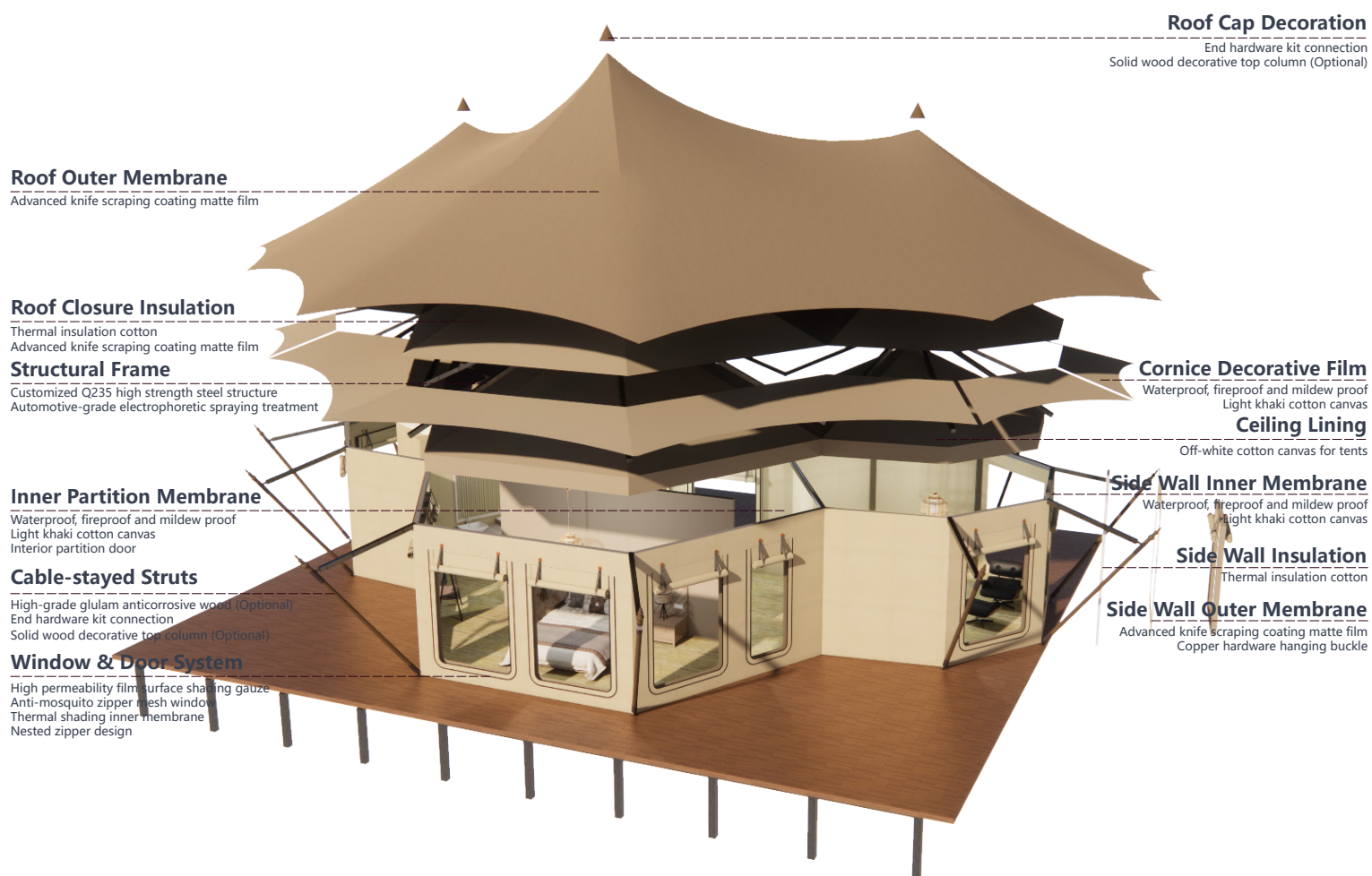
审 算

审 核

审 计

审 算

Material specification



Facade demonstrate

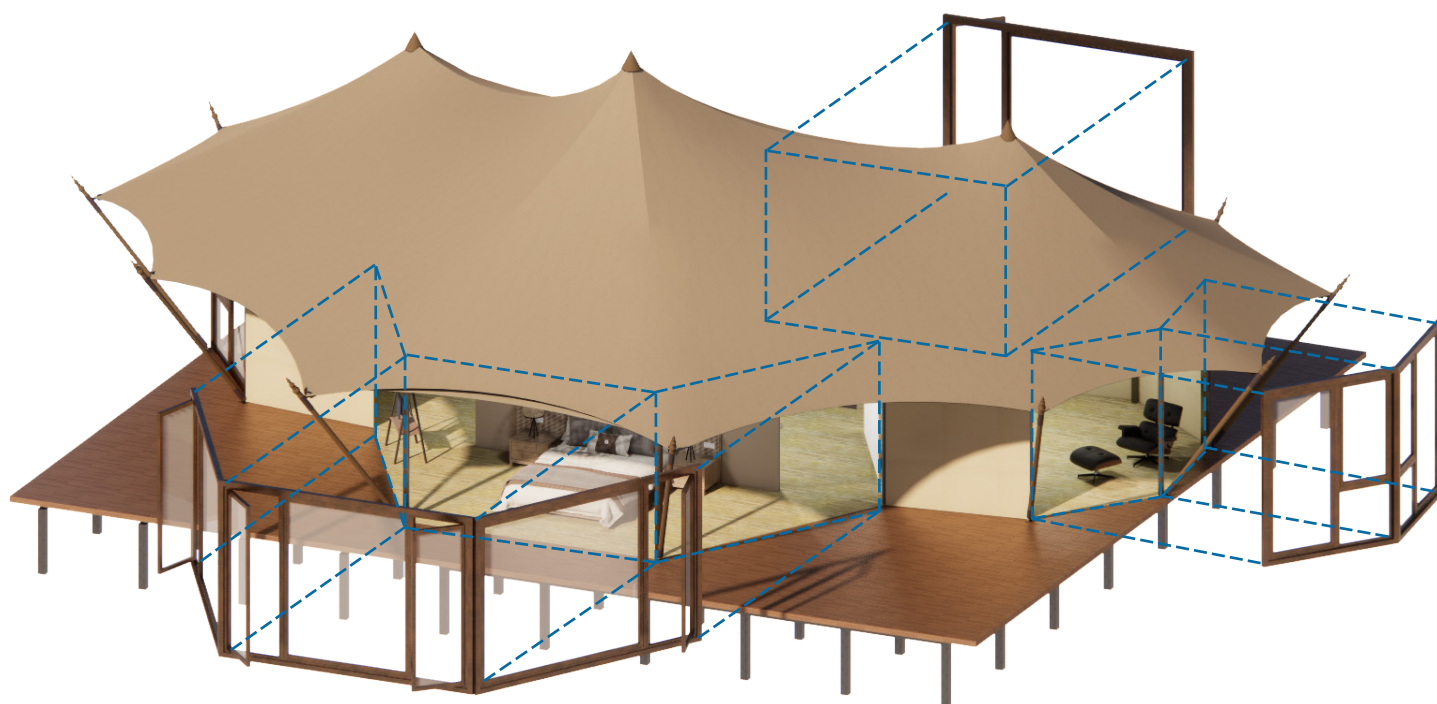




Tent Optional Accessories

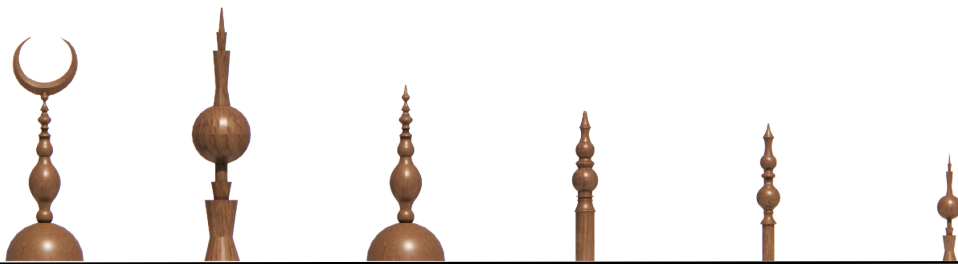
Glass windows: Double hollow LOW-E glass 5+12A+5;
Special bridge-cut aluminum alloy for glass window;
Steel auxiliary frame fixed; High quality hardware;
Bridge-cutoff aluminum alloy frame (customized color to match the overall style).

Glass door: Double hollow LOW-E glass 5+12A+5;
Special bridge-cut aluminum alloy for glass window;
Steel auxiliary frame fixed; High quality hardware;
Bridge-cutoff aluminum alloy frame (customized color to match the overall style).



Top column Optional Accessories

Top column: Solid wood decorative top column.
It can be customized according to the project style.



Comprehensive service

DESIGN

Conceptual Design: Project Feasibility Report; Project Concept Planning Proposal.
Schematic Design: Architectural Design; Interior Decoration Design; Landscape Design.
Deepening Design: Construction Drawing Design and Deepening; Detailed Materials Manual.

MANUFACTURE

Flexible Production: Assemble components are produced in self-operated factory.
Industrial production ensures fast assembly construction.
Accessories Purchasing: Highly cost-effective Accessories; Well-optimized and customized by Designers.

CONSTRUCTION

Guided Construction: On-site Construction Disclosure; Guidance and Acceptance Check;
Commissioning Guidance.
All-inclusive Construction: We have project managers and skilled workers to provide all-inclusive construction services.



For further information,
please contact our sales.

TEL	+ 86 15818508822
EMAIL	info@shoulderarchi.com
WEB	www.shoulderarchi.com



Shenzhen Management Center

Room 2710, F Building, Xinghe World, No.1 Yabao Road, Nankeng Community, Bantian Street, Longgang District, Shenzhen City, Guangdong Province, China.



Zhengzhou R&D Center

No.6 Liangku Industrial Zone, North Third Ring Road, Huiji District, Zhengzhou City, Henan Province, China.



Yingde Manufacturing Center

Shoulder Industrial Zone, Xujiashuang, Hanguang Town, Yingde, Qingyuan City.



Guangzhou Marketing Center

Room 1308, South Tower, Guangzhou World Trade Center Complex, No.371, Huanshi Dong Road, Yuexiu District, Guangzhou City, Guangdong Province, China.